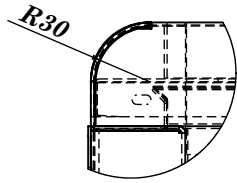
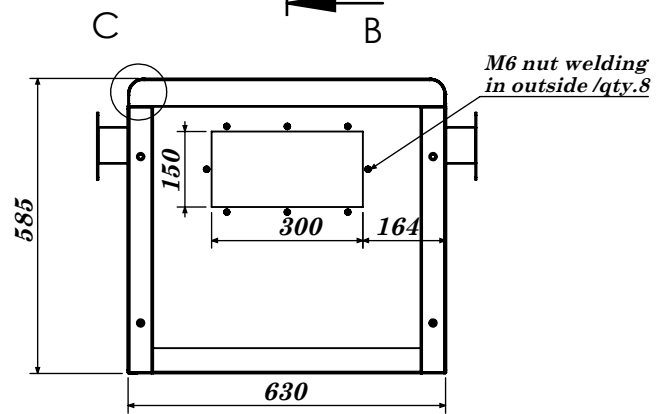


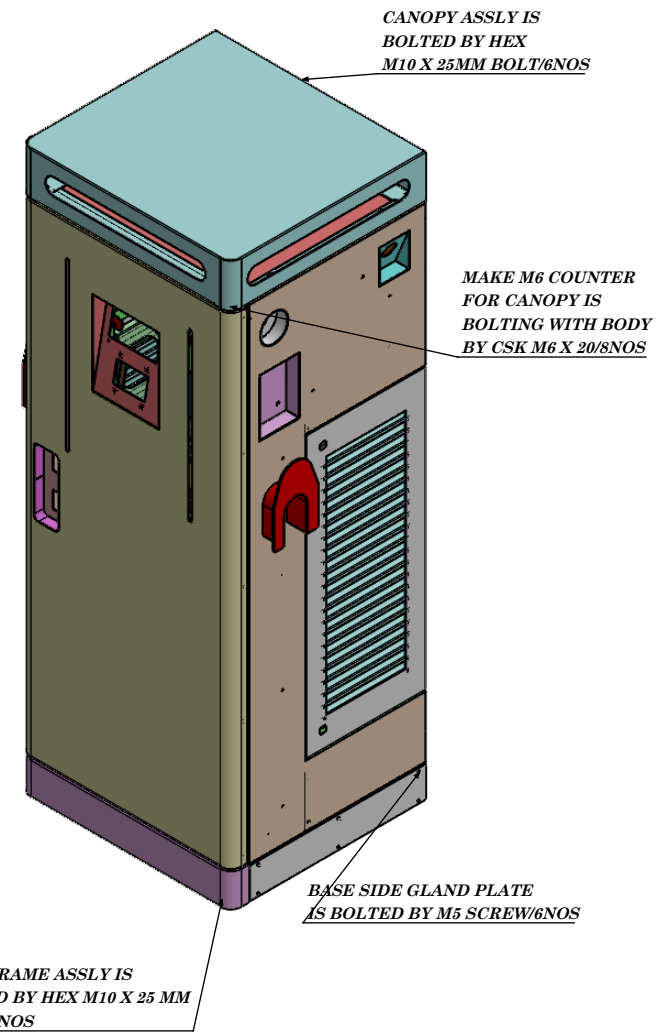
Inside welding  
M8X20 CSK

INSIDE WELDING ON  
BOTH SIDE CSK  
M5 X 20 /4+4 NOS

SECTION B-B  
SCALE 1 : 15



DETAIL C  
SCALE 1 : 4



1.		YOGESH			
MOD.NO.	MODIFICATION	MODI.BY	DATE	COMMENTS	
	NAME	SIGN	DATE	 <b>JE MECHANICAL PVT LTD</b>	
DRAWN	YOGESH		06/06/2026		
CHK'D					
APP'VD					
ANGLE OF PROJECTION:		WEIGHT: XX Kg.		TITLE:	
		MATERIAL :		<b>JOULE POINT</b>	
				DWG NO.	
				<b>ASSLY OF 120KW DUAL GUN CHARGER</b>	
				SCALE: NTS	SHEET 1 OF 1
				A4	

